



Erasmus+
KA3

Sustainability & Growth
Task Force



Erasmus+ programme KA3 - Support for Policy Reform Civil Society Cooperation in the field of Youth

Sustainability & Growth Task Force Paper

In the context of the Sustainability & Growth Task Force Meeting of the Erasmus+ programme KA3 - Support for Policy Reform Civil Society Cooperation in the field of Youth (616411-EPP-1-2020-1-DE-EPPKA3-CSC-YOUTH), led by YEPP EUROPE, topics such as **fostering good governance**, administration and financial management of the network; the **effectiveness and efficiency** of management, finances and administration of the network; as well as **strategies for sustainability and growth**, including (funding) were discussed among the members of the Task Force.

The following partners were part of this Task Force:



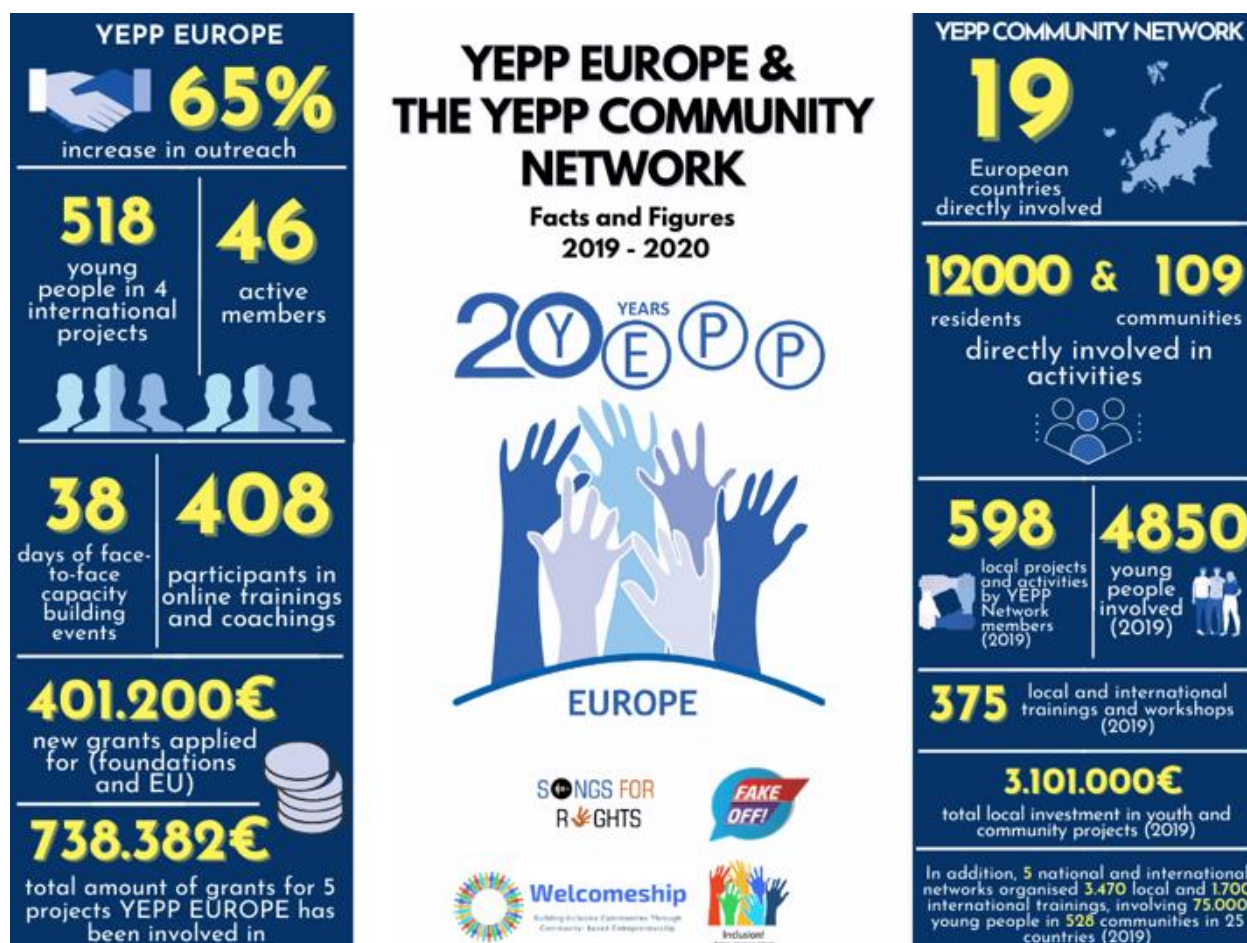
Governance, administration and financial management

Regarding the governance and management of the YEPP Community Network there are several bodies and structures in place which were discussed in the Task Force and judged effective and efficient but can always be improved, enlarged and further developed.

The YEPP Community Network:

- **YEPP EUROPE:** As part of the Institute for Community Education at the International Academy Berlin, YEPP EUROPE functions as coordinating and central body to the network. It is in charge of the expansion of the network, of fundraising, financial management and coordination of the network.

- **Members of the YEPP Community Network:** There are three member types: YEPP Local Sites, YEPP Project Partners (including other networks) and YEPP Associates. (<https://yeppeurope.org/get-involved/>). The link between YEPP EUROPE and the members is not based on a legally binding contract but based on the YEPP Community Network Working Standards (<https://yeppeurope.org/wp-content/uploads/2017/10/YEPPEuropeWorkingStandards2017FINAL-1.pdf>) through which members embrace the YEPP Goals and Principles.
- **YEPP EUROPE Advisory Board:** A board composed of foundation representatives and network members which advises YEPP EUROPE on strategic development issues.



In 2019-2020, YEPP EUROPE expanded the outreach to 19 European countries, which constitutes a 65% increase in countries, YEPP Sites, Project Partners, Communities, residents and young people involved in the YEPP Community Network since 2014.

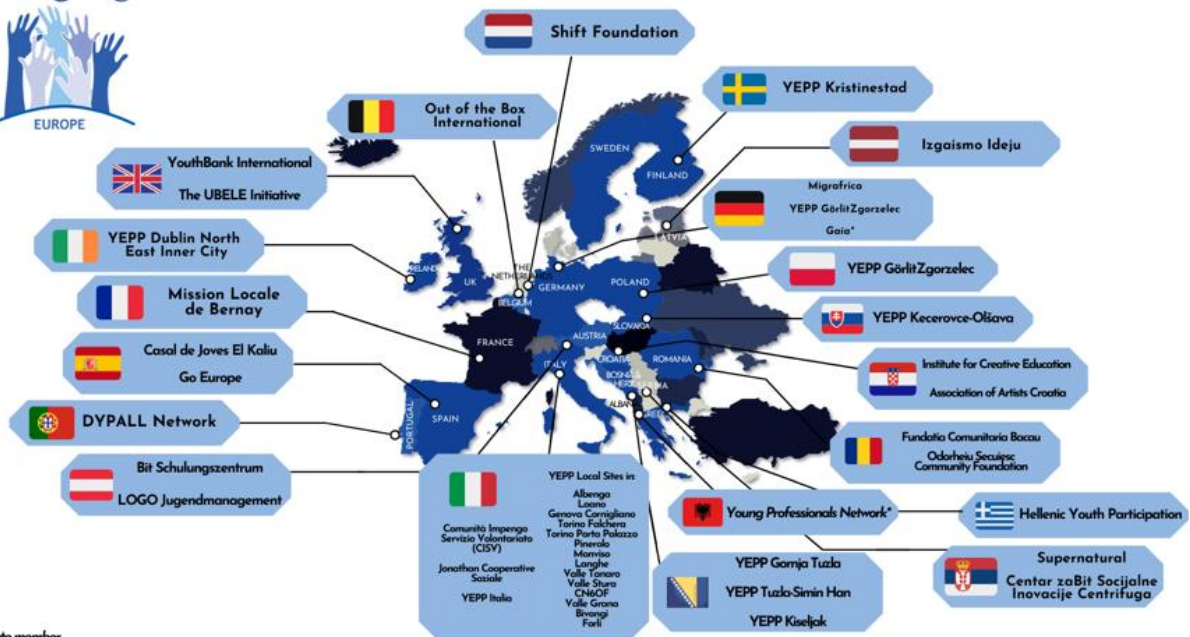
During this period, the YEPP Community Network grew to 46 active members (YEPP Local Sites & Project Partners), mainly the partners of the projects YEPP EUROPE either coordinated or was involved and who wished to stay connected as part of the YEPP Community.

The graph below illustrates a map of the YEPP Community Network.

All the members acknowledge the YEPP Working Standards and promote the YEPP values, such as equal opportunities, young people at the core of decision-making processes, inclusive communities and cross-sectorial partnership.



THE YEPP COMMUNITY NETWORK MAP



*associate member

The consortium of network partners in the context of the Erasmus+ programme KA3

The consortium of partners in this project is composed of 12 partner organisation from 12 European countries (<https://yeppeurope.org/partners-2/>), all members of the YEPP Community Network. This consortium has committed to and has implemented a working programme of 42 local and international activities for the year 2020 outlined here: <https://yeppeurope.org/eu-youth-strategy/>

In terms of management of this sub-network of partners, 6 Statutory meetings were organised:

- General Assembly I
- Working Group Policy Development
- Working Group Cross-Sectorial Partnerships
- Youth Steering Group
- Sustainability and Growth Taskforce
- General Assembly II

Strategies for sustainability and growth

Funding

YEPP EUROPE is mainly funded by two foundations, the Charles Stewart Mott Foundation (USA) and Compagnia di San Paolo (Italy). While its infrastructure costs are covered by the grants of these two foundations, YEPP EUROPE also strives for new grants from other foundations, income generating efforts, as well as the European Commission (mainly ERASMUS+ KA1,2,3) to further develop the YEPP Community Network through vertical expansion (increase geographical scope of the network) and horizontal expansion (further develop its expertise in fields close to young peoples' needs, such as: entrepreneurship,

social inclusion, advocacy, media work, human rights, climate action, mental health, etc.)

Sustainability & Funding of YEPP EUROPE & YEPP Community Network



Future outlooks for sustainability and development

The future outlook of YEPP EUROPE and YEPP Community Network is defined as follows:

Unique positioning

A fundamental element of the YEPP approach is the combination of youth empowerment and community empowerment. Hence, it is an aim for YEPP EUROPE to be the leading expert in this unique approach. An important aspect is also the transfer of knowledge to young people and youth workers with fewer opportunities through non-formal learning methods.

Increasing outreach and impact

Expansion is viewed both horizontally and vertically. Horizontal expansion entails the increasing involvement of more young people, communities, and other stakeholders in and beyond Europe. Vertical expansion involves close collaboration with young people in order to determine specific concerns and identify issues that may not have been dealt with in previous activities. Furthermore, increasing the impact means a continuous review of the quality and sustainability of the YEPP approach based on the results and lessons learnt from evaluation activities, consultations with stakeholder groups and impact research.

Innovating for a better world

In parallel to the changing needs and experiences of young people and communities, creative and dynamic methods and approaches are seen to be necessary. Through the utilization of technology and newer learning methods, fuelled by close collaboration with

young people, methods are aimed to be both effective and grounded on the needs of individuals.

Vision, commitment, partnerships

The establishment and development of partnerships is already a strong suit of the YEPP approach. However, in order to continually address the evolving needs of young people and communities, YEPP EUROPE aims to create more partnerships between local and transnational organizations in order not only to address specific issues in their local community, but also to share this knowledge to the transnational network.

Sustainability

YEPP EUROPE, as it is now, is made possible due to the support of foundations, particularly the Charles Stewart Mott Foundation and the Compagnia di San Paolo. However, YEPP EUROPE also seeks to diversify and strengthen its endeavours towards the sustainability of short and long term efforts. This is a unique challenge, as it is important to continue collaboration with young people while fulfilling clients' and funders' needs. However, this is definitely feasible through support of current and future partners who share the same vision of youth and community empowerment.